

**Dam of HEPP Koman, 1980 - 1986**



Physical Model of dam spillways, HEPP Koman



At the beginning of civil works for Koman Dam, A bridge at Dam axe



View of Dam Location



Drilling works

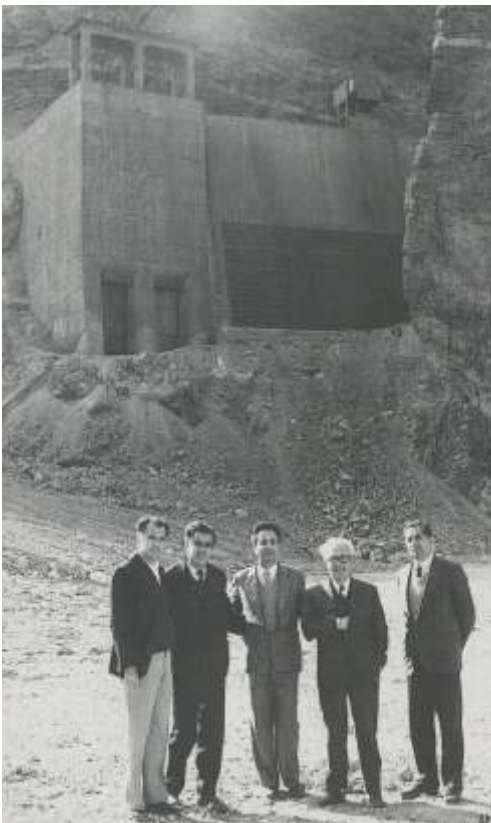




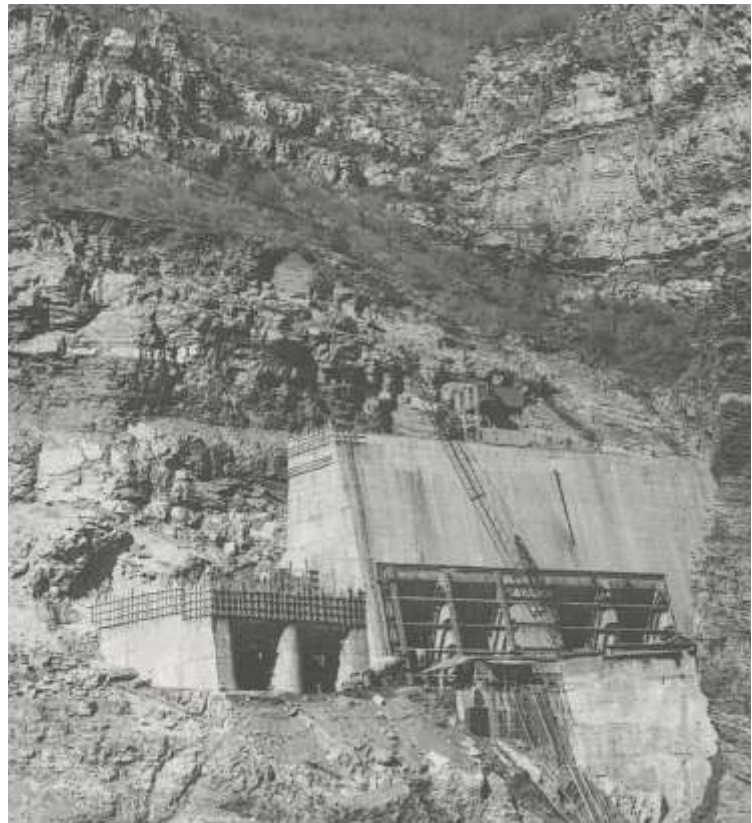
During the works for two galleries of Dam



Drilling works



5 Excellent Engineers of Komani Dam  
 Prof. Petrit Radovicka  
 Prof. Fahrudin Hoxha  
 Eng. Emin Musliu  
 Eng. Egon Gjadri  
 Eng. Ismail Ahmeti

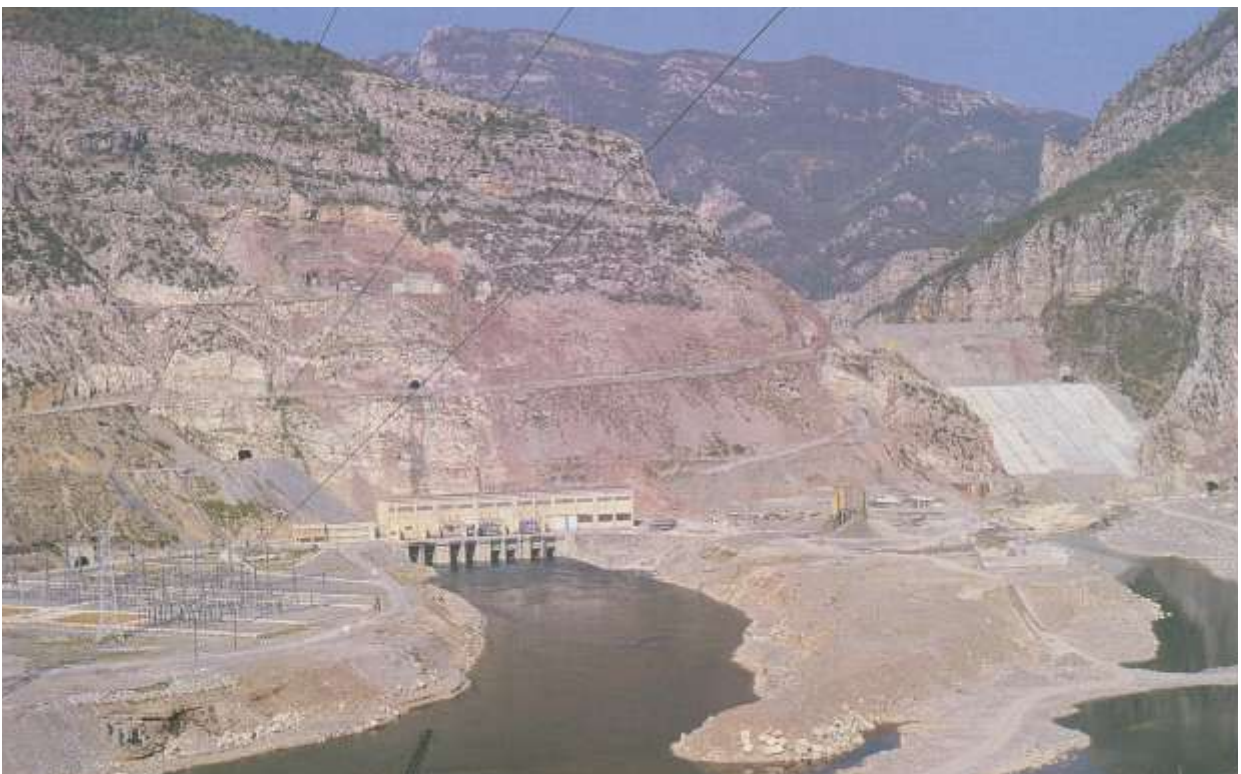


Intake of Dam



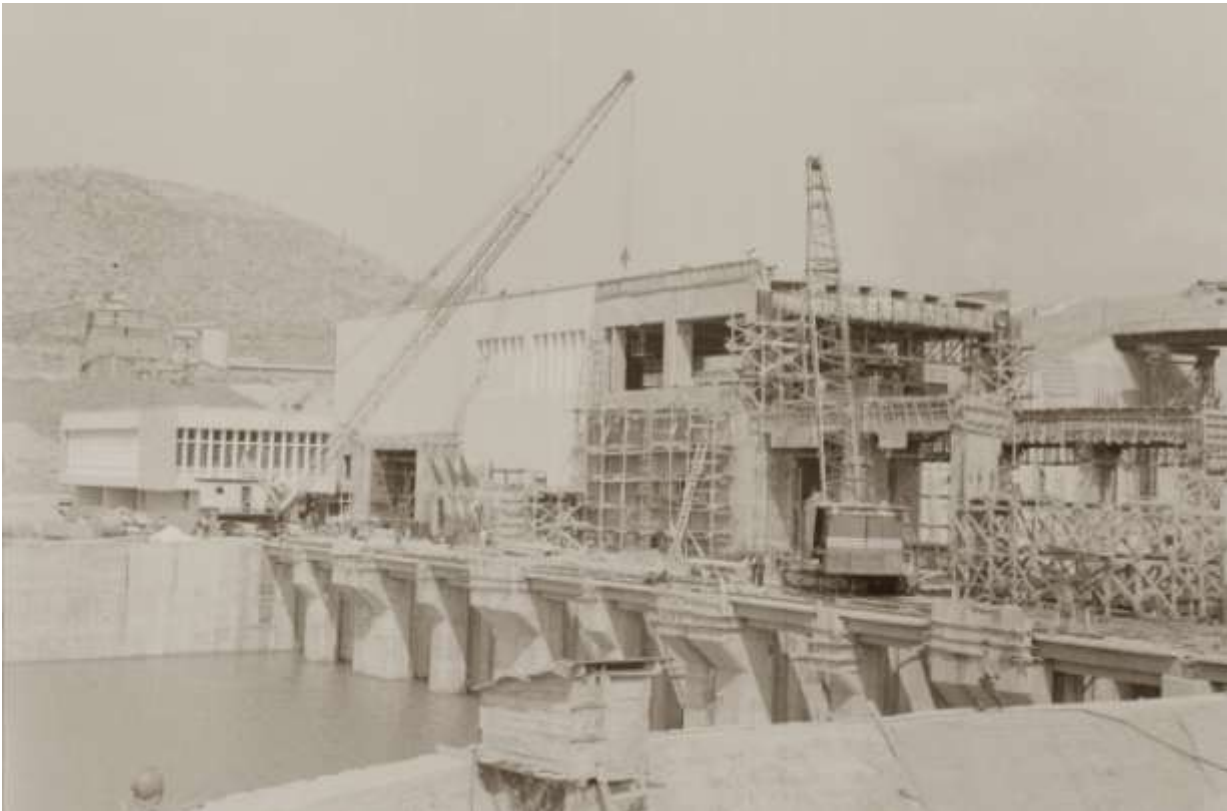


During construction of reinforced Concrete Face of Dam, HEPP Koman

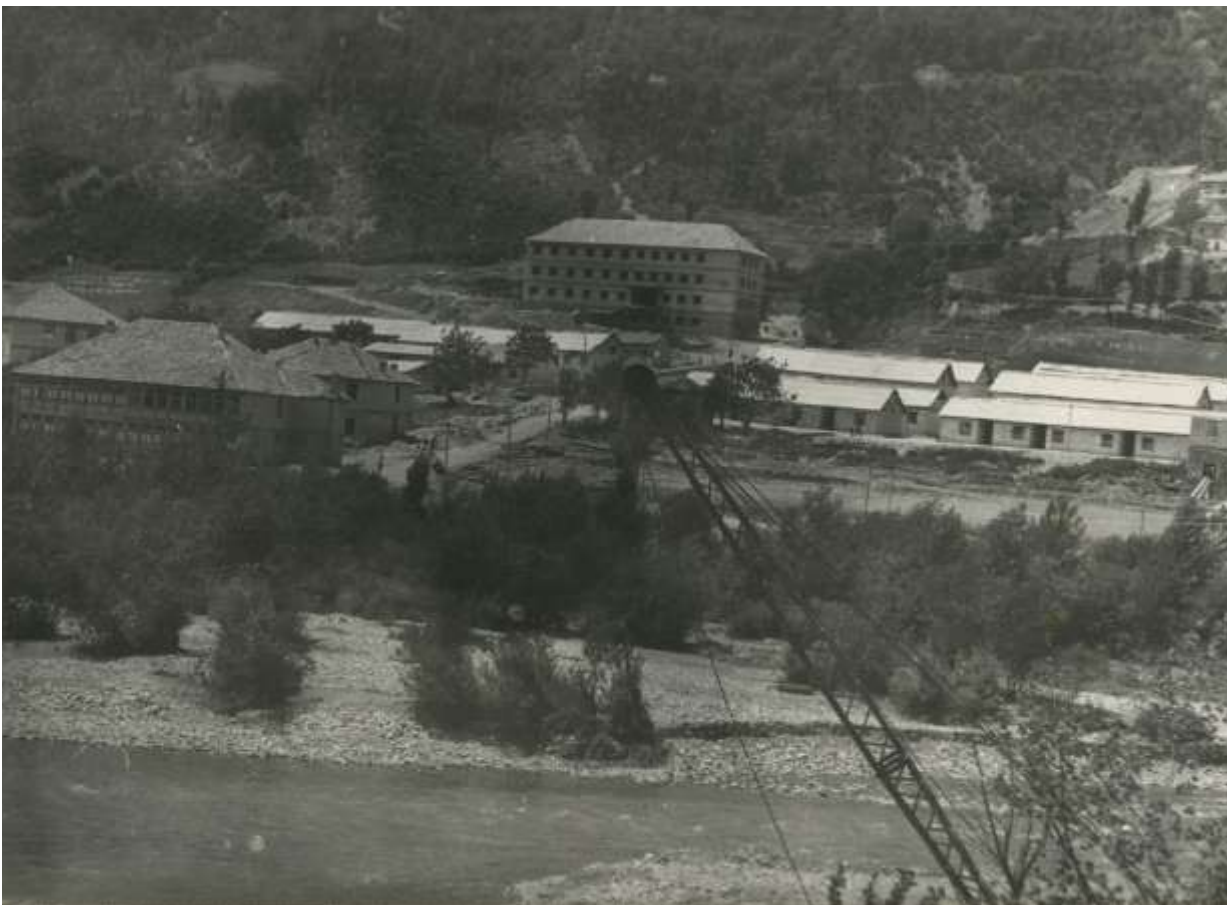


View of Dam from downstream





During the construction of Turbines Building, HEPP Koman



Head working Offices and Living houses for Employers and Engineers